

TOYOTA HILUX INSTALLATION MANUAL

Installation Time (Hours):

0.5

1

2

3

Professional installation recommends

TOOLS



12mm 13mm



Attention:

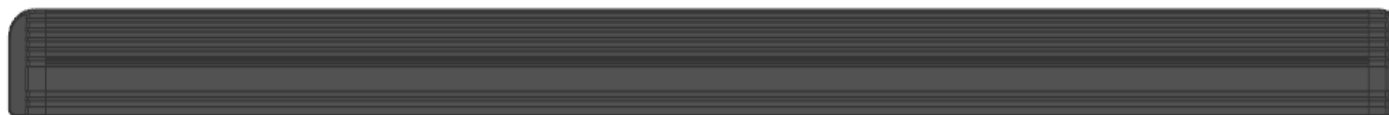
We highly recommend you to find professional store to install the product.

Attention:

If not follow the instruction may damage the ECU, motor or the car.

TOYOTA HILUX INSTALLATION MANUAL

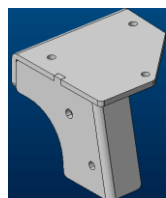
COMPONENTS LIST



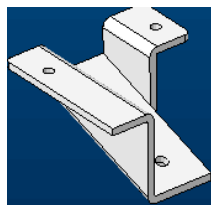
Running board, 2pcs



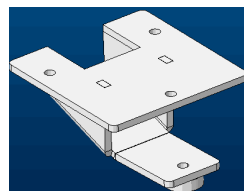
ECU



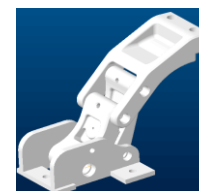
Bracket connection, rear 2



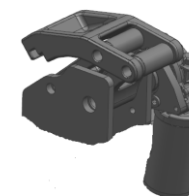
Bracket connection, middle 2



Bracket connection, front 2



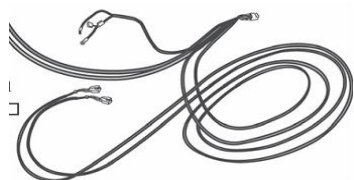
Idler bracket 4 sets



Motor bracket 2 sets



OBID KIT 1 SET



Wire harness: one set for motor power and signal



M8*30 socket cap screw ,8 pcs



M8*35 socket cap screw ,2 pcs



M8*55 socket cap screw ,2 pcs



N6*25 socket cap screw 12 pcs



M8 nut w conical washer 2 pcs



Tie wire 20 pcs



U shape washer 10pcs



M8 washer 12 pcs



M6 spring washer 12 pcs



M6 washer 12 pcs

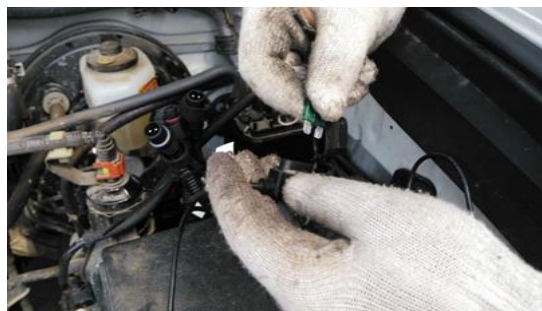


Plastic line 1

Screw package

TOYOTA HILUX INSTALLATION MANUAL

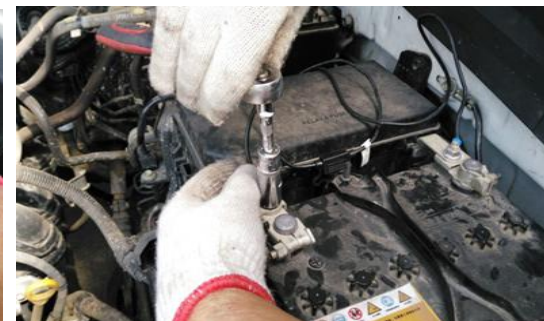
1 Install ECU, OBD and wiring



1) take out fuse



2) connect power wire to battery: red one with fuse is positive.



Caution! Tighten battery screw very tight! If loose, may get damage to the car.



4) from this position, insert to co-drive



5) negative position



6) ECU stick here by 3M tape

TOYOTA HILUX INSTALLATION MANUAL



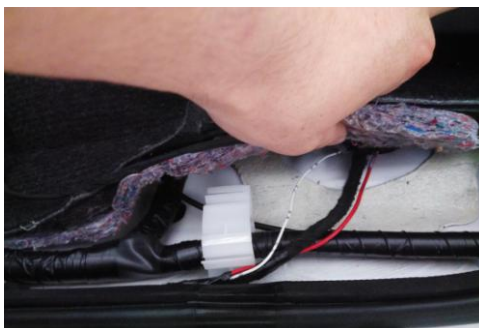
7) right motor wire and OBD line from this position to drive site



8) connect OBD as above picture



9) right motor line as above to go to chassis site



10) motor line from above position to go to chassis site



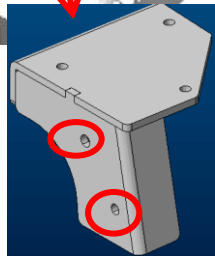
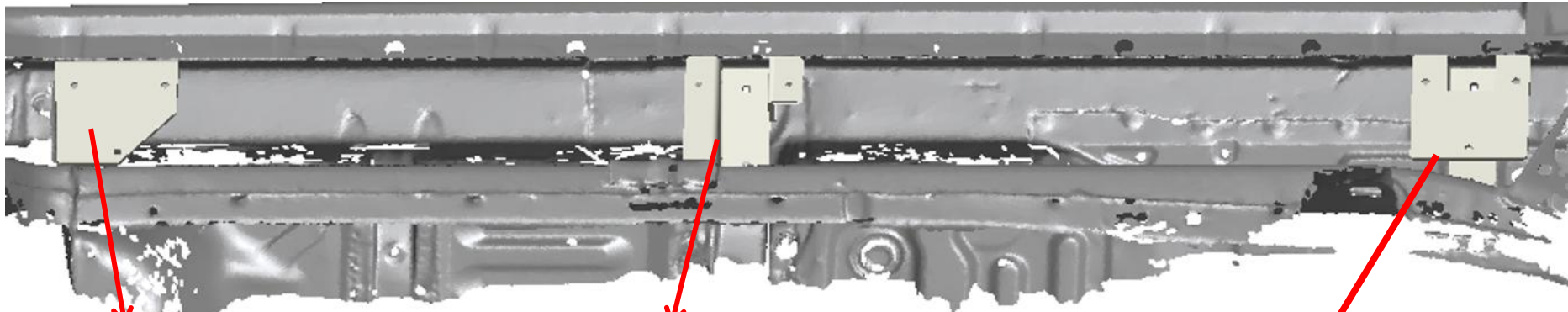
11) through plastic cover to chassis

12) connect motor connectors and use tape to protect. Connect OBD line with ECU connector. Insert fuse to test if motor work well.

TOYOTA HILUX INSTALLATION MANUAL

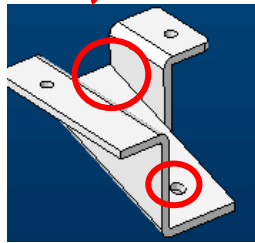
2 Install connections (right side, 2 sides in same way to install)

Car direction (right)



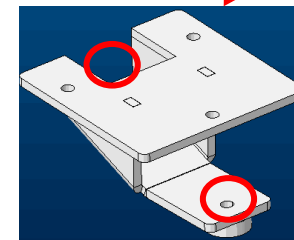
Rear connection

M8 screws, 2pcs



Middle connection

M8 screws, 2pcs



Front connection

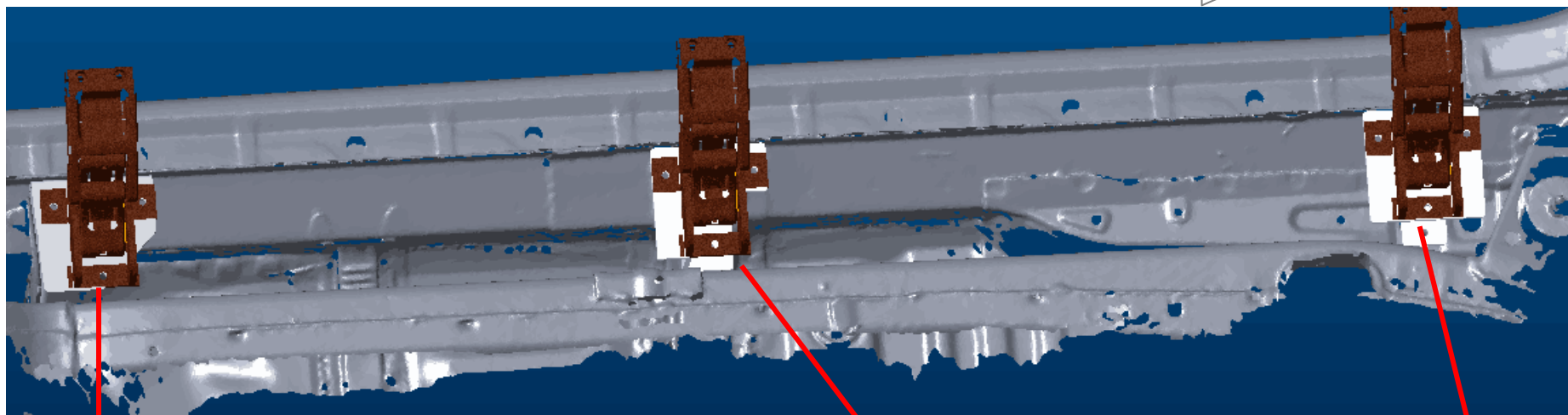
M8 screws, 2pcs

Tighten all screws

TOYOTA HILUX INSTALLATION MANUAL

3, Install bracket

Car direction (right)

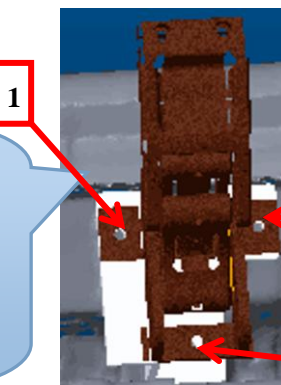


RR idler bracket

Right middle motor bracket

RF idler bracket

1.2.3, use M8x30 screws and nuts to fix.
KEEP ALL BRACKET SCREWS A LITTLE LOOSE, SO THAT BRACKET CAN MOVE WITH RUNNING BOARD!!!

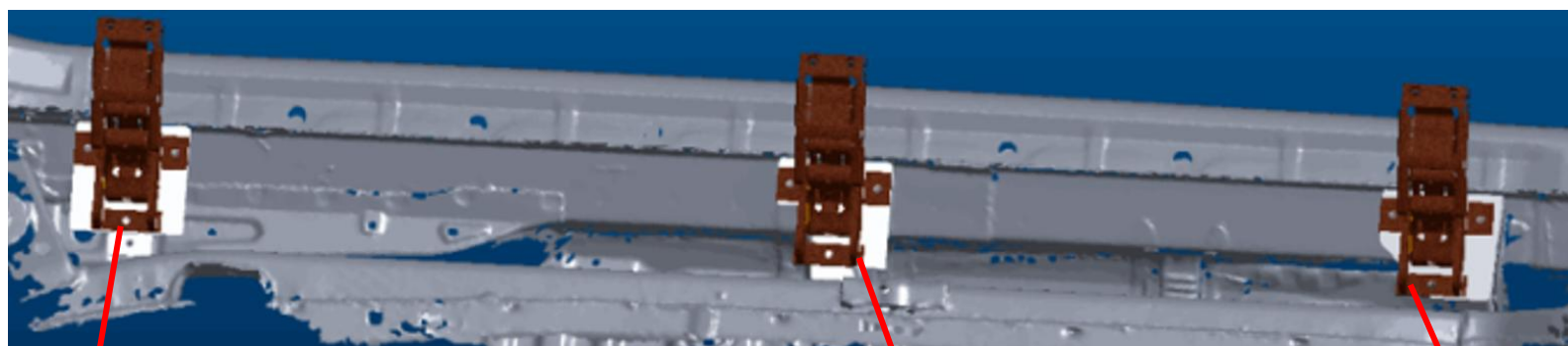
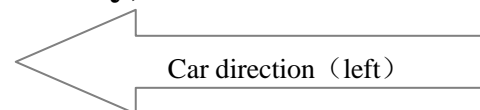


3 brackets are in same way to fix

TOYOTA HILUX INSTALLATION MANUAL

4, Install connection, left side (refer to right side, it is in same way)

5, Install bracket, left side

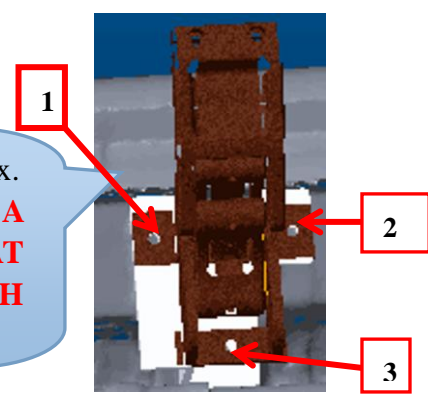


LF idler bracket

Left middle, motor bracket

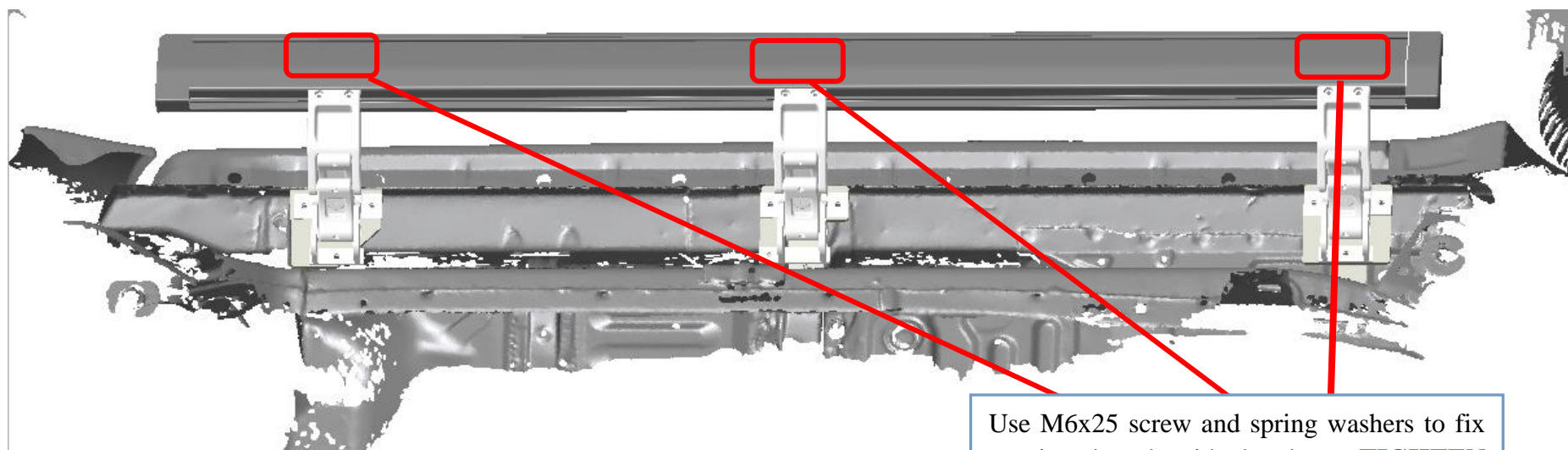
LR idler bracket

1.2.3, use M8x30 screws and nuts to fix.
KEEP ALL BRACKET SCREWS A LITTLE LOOSE, SO THAT BRACKET CAN MOVE WITH RUNNING BOARD!!!



TOYOTA HILUX INSTALLATION MANUAL

6, install running board (left and right side are in same way)



Use M6x25 screw and spring washers to fix running board with brackets. **TIGHTEN SCREWS**

TOYOTA HILUX INSTALLATION MANUAL

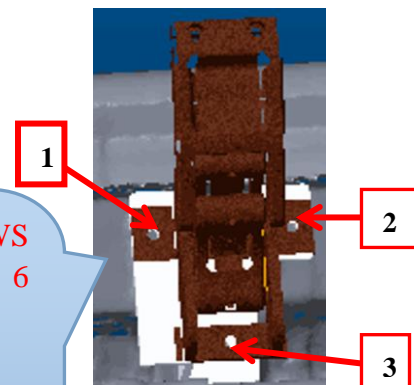
7, Testing and adjust the balance



Insert fuse again. Then open and close doors to let step work. To assure them up and down freely to adjust position by itself.

FASTEN ALL THE SCRWS
(3x6=18) ON THE 6
BRACKETS

If still not balance, use U
shape washer to adjust it.



TOYOTA HILUX INSTALLATION MANUAL

8, Checking all doors activate, the side step work when doors open and close.



Now the installation is finished.



To lift the car as
showed



To lift the car

TOYOTA HILUX INSTALLATION MANUAL



To changing tire

Automatic power deploy:

The running boards will extend down and out when the door is opened.

Automatic stop:

If an object is in the way of the moving running board, the running board will automatically stop. To reset, clear any obstruction, then simply open and close the door to resume normal operation.

Manually set in the deployed (OUT) position for access to the roof:

Step your foot while at the same time closing the door. To resume normal operation, open and close the door.

Maintenance: In adverse conditions, debris such as mud, dirt, and salt may become trapped in the running board mechanism, possibly leading to unwanted noise. If this occurs, manually set the running boards to avoid spraying the motors directly. After washing, apply silicone spray lubricant to the hinge pivot pins.

Caution! Keep hands and feet away when the running board is in motion.