

INSTALLATION MANUAL FOR LAND CRUISER 300

Installation Time (Hours):

0.5

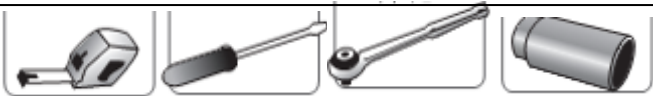
1

2

3

Professional installation recommends

TOOLS



12mm 13mm



Attention:

We highly recommend you to find professional store to install the product.

Attention:

If not follow the instruction may damage the ECU, motor or the car.

INSTALLATION MANUAL FOR LAND CRUISER 300

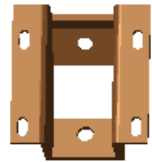
COMPONENTS LIST



Running board, 2pcs



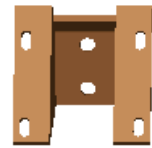
ECU



Bracket connection, front 2



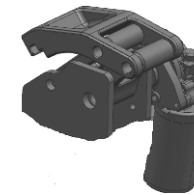
Bracket connection, middle 2



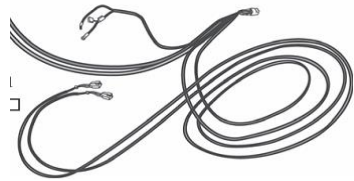
Bracket connection, rear 2



Idler bracket 4 sets



Motor bracket 2 sets



Wire harness: one set for motor power and signal



M8*35 T shape bolt, 4 pcs



N6*25 socket cap screw 12 pcs



M8 nut 4 pcs



Plastic line 1



U shape washer 10pcs



M8 washer 14 pcs



M6 spring washer 12 pcs



M8x25 screws 10 pcs



Tie wire 20 pcs

Screw package

INSTALLATION MANUAL FOR LAND CRUISER 300

1 Install ECU, OBD and wiring



1) take out fuse



2) connect power wire to battery: red one with fuse is positive.



Caution! Tighten battery screw very tight! If loose, may get damage to the car.



4) from this position, insert to co-drive

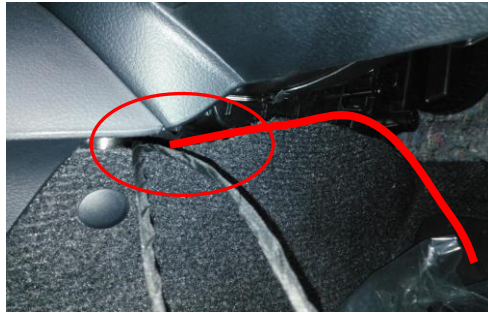


5) negative position



6) ECU stick here by 3M tape

INSTALLATION MANUAL FOR LAND CRUISER 300



7) right motor wire and OBD line from this position to drive site



8) take off door switch plastic cover



9) take out the door switch connector



11) plug in the connector with door switch



12) connect with door switch and recover it



13) right motor line as above to go to chassis site

INSTALLATION MANUAL FOR LAND CRUISER 300



14) motor line from above position to go to chassis site

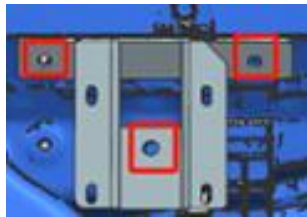
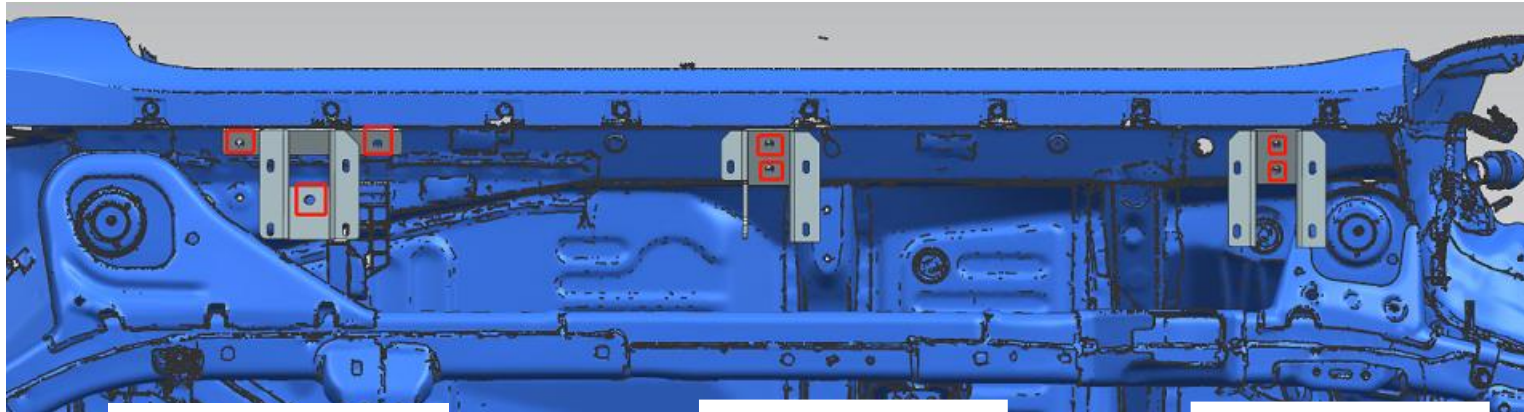


15) through plastic cover to chassis

16) connect motor connectors and use tape to protect. Connect OBD line with ECU connector. Insert fuse to test if motor work well.

INSTALLATION MANUAL FOR LAND CRUISER 300

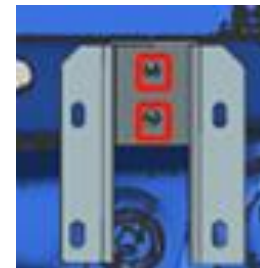
2 Install connections (left side, 2 sides in same way to install)



Use M8x35 T shape and M8x25 screws to fix



Use M8x25 screws to fix

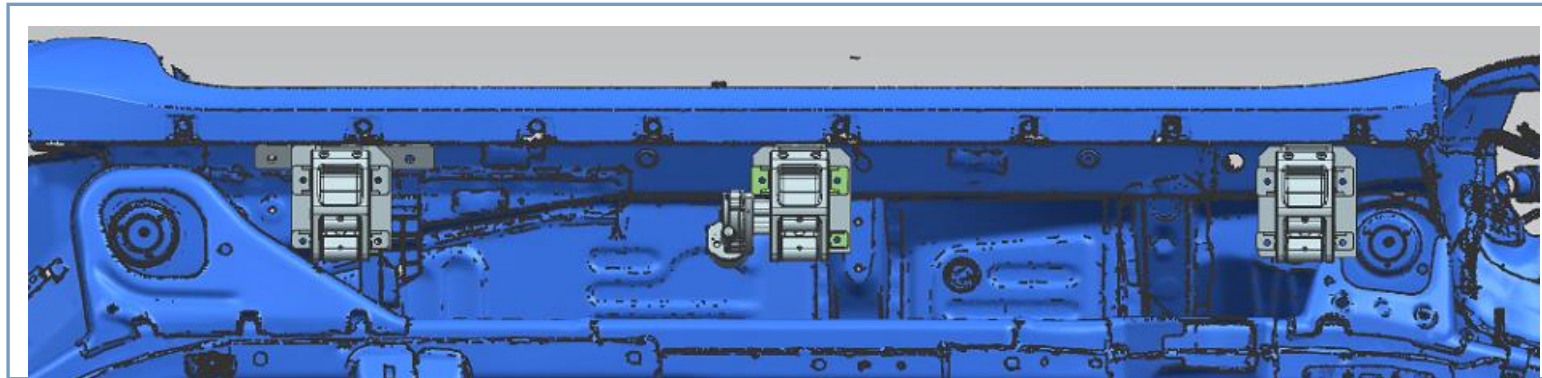


Use M8x25 screws to fix

Tighten all screws!

INSTALLATION MANUAL FOR LAND CRUISER 300

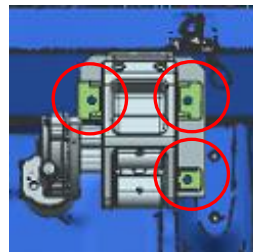
3 Install bracket (left side, 2 sides in same way to install)



LF

LM

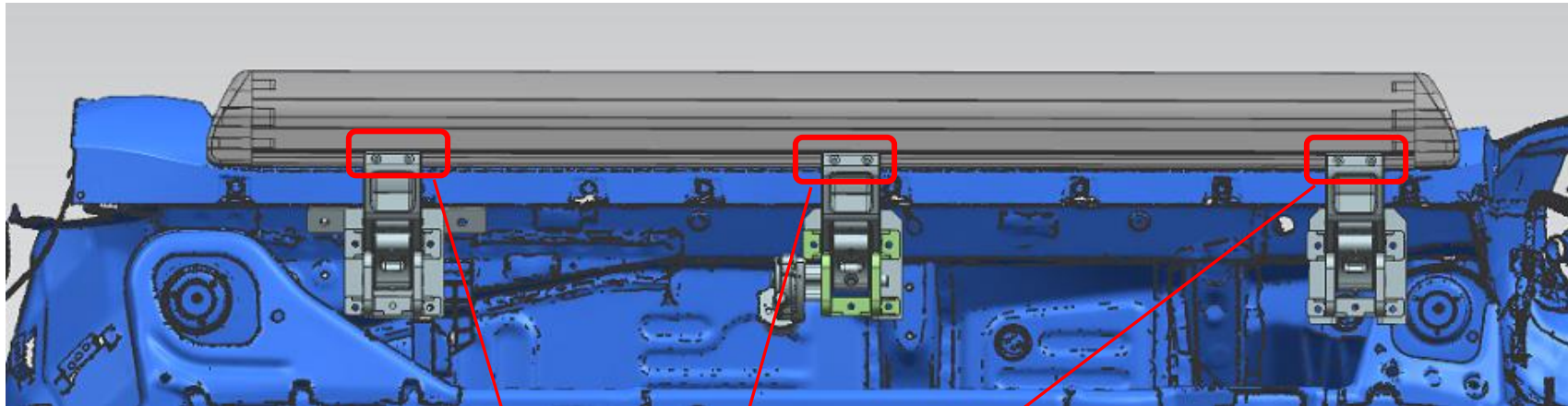
LR



Fixing brackets with connections, **keep all screws a little loose so that to adjust the balance**

INSTALLATION MANUAL FOR LAND CRUISER 300

4, install running board (left and right side are in same way)



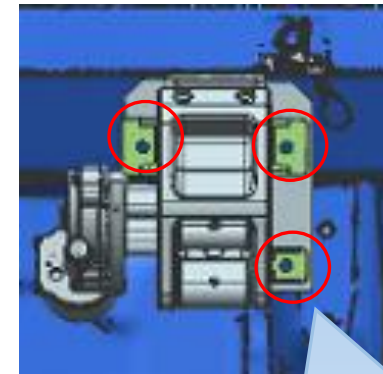
Use M6x25 screw and spring washers to fix running board with brackets. **TIGHTEN SCREWS!**

INSTALLATION MANUAL FOR LAND CRUISER 300

5, Testing and adjust the balance



1) Insert fuse again. Then open and close doors to let step work. To assure them up and down freely to adjust position by itself.



2) Tighten all screws to fix brackets with connections.

If still not in balance, use U shape washer to adjust it.

INSTALLATION MANUAL FOR LAND CRUISER 300



6, Checking all doors activate, the side step work when doors open and close. Now the installation is finished. Protect all connectors with tape to avoid loose.