

Installation Manual for Defender

Please Read The Manual Carefully
Before Installation

Please follow the Manual

Product Name: Defender Electric

Running Board

Suit For: 2020+

Installation Position:



Need following tools:



Spanner tool



Pincher



plastic tool

Caution:

- 1. During installation, the vehicle must be flamed out to ensure that the vehicle key is pulled out and the instrument is installed without power supply.**
2. Unplug the fuse before installation, and plug it back when finished installation.
3. Please check and tidy up the side steps and accessories before installation to improve the installation efficiency.

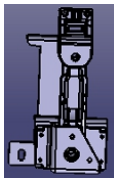
Components list (Others are spare parts)



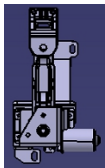
1) Board 2 pcs



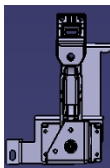
2) RF motor bracket



3) RR bracket



4) LF motor bracket



5) LR bracket



6) ECU 1 pc



7) Wire harness: 1 set



9) M10*35 T-shape screw
2pcs



10) M6*25 socket cap screw 3pcs



11) M6*25 socket cap screw 4pcs



12) M8*25 socket cap screw 8pcs



13) M6 Washer 8pcs



14) U shape washer 10 pcs



15) PlasticLine 1 pcs



Screw Package

16) Tie wire 20 pcs

1. Install ECU and wiring



1) Remove the trunk mat



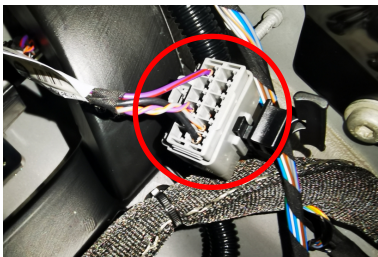
2) Take away the foam



3) Find the original connector on the left side of the trunk.



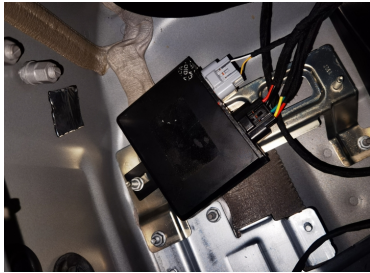
4) Original connector



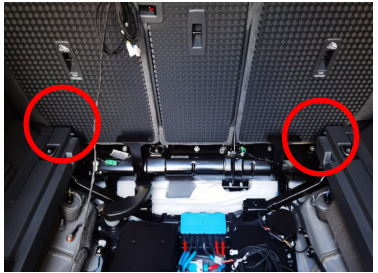
5) Plug our wires with the original connector



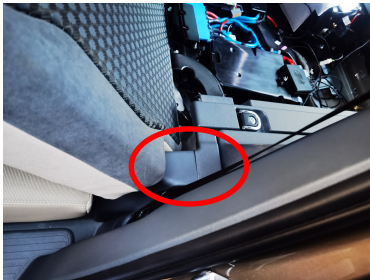
6) Fix ECU at the left rear corner of the trunk.



7) Fix ECU with M6 screw nut



8) Pass through the left & right motor lines to chassis



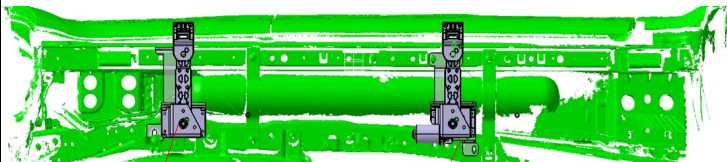
9) Take off the side trim panel at the rear seat



10) Turn off the original leather plug and pass through the motor wire to the chassis

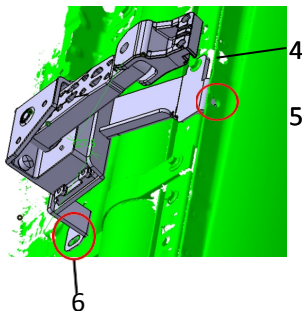
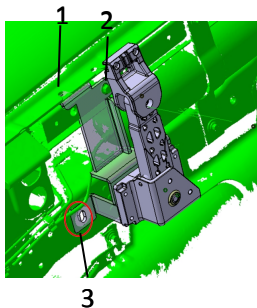
2) Install brackets

1.Brackets Installation



RR idler bracket

RF motor bracket



No. 1 use M8*25 nut to fix

No. 2 use original vehicle screw to fix(need to take off the original vehicle screws first)

No. 3 use M10*35 T-shape screw to fix

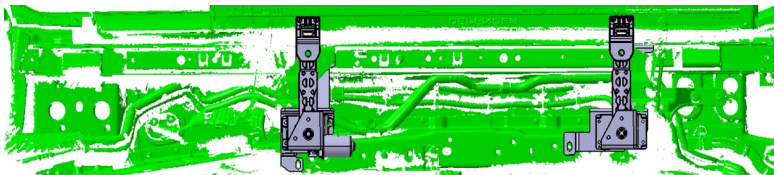
No. 4 use original vehicle screw to fix(need to take off the original vehicle screws first)

No. 5 use M8*25 screws to fix

No. 6 use M6*25 socket cap screws to fix

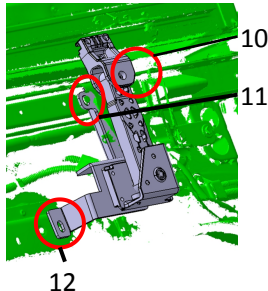
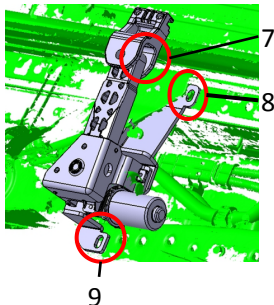
**CAUTION: TIGHTEN ALL
BRQCKETS SCREWS DIRECTLY!**

2) Install left brackets



LF Motor Bracket

LR idler Bracket



No. 7 use M8*25 nut to fix

No. 8 use original vehicle screw to fix(need to take off the original vehicle screws first)

No. 9 use M6*25 socket cap screws to fix

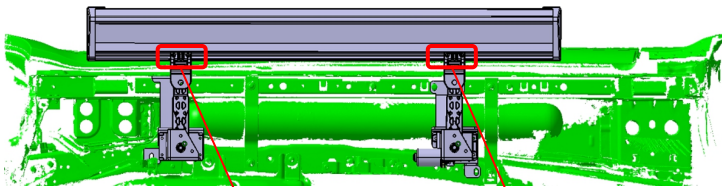
No. 10 use M8*25 screws to fix

No. 11 use original vehicle screw to fix(need to take off the original vehicle screws first)

No. 12 use M6*25 socket cap screws to fix

**CAUTION: TIGHTEN ALL SCREWS
DIERECTLY!**

2. Boards Installation (Both sides are in same way)



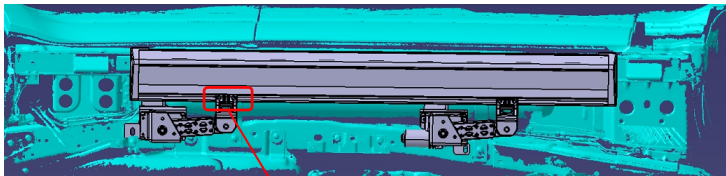
2) Idler brackets use M6*25 socket cap screws and M6 spring washer to fix

Caution: Do not tighten the screws

1) Motor bracket use M6*25 socket cap screws and M6 spring washer to fix the board

Caution: Tighten all the screws directly

3. Boards Installation and Adjusting



Connect wiring with motor, open an close the door, during the board retract, push the board to let board retract tightly, keep it tightly and tighten idler bracket screws to fix bracket with board

4. Install another side in same way

5. Installation finished



Deploy



Retract