









FORD EVEREST INSTALLATION MANUAL

Installtion time

| | | | |
|--------------------------------------|---|---|---|
| 0.5 | 1 | 2 | 3 |
| Professional installation recommends | | | |

Tools

| | | | |
|---|---|---|---|
|  |  |  |  |
| 13mm | | | |
|  |  |  |  |



| | |
|-------------------|--|
| Attention: | |
| | We highly recommend you to find professional store to install the product. |
| Attention: | |
| | If not follow the instruction may damage the ECU, motor or the car. |

FORD EVEREST INSTALLATION MANUAL

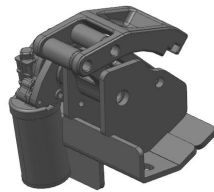
COMPONENTS LIST



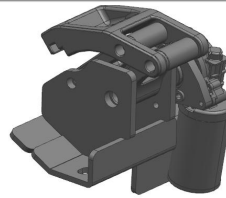
Running board 2 pcs



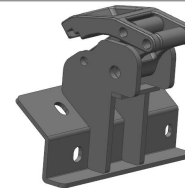
ECU



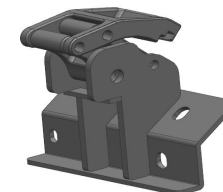
RF motor bracket



LF motor bracket



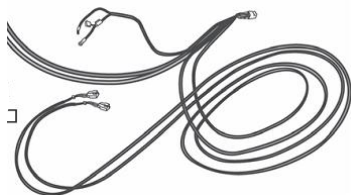
RR idler bracket




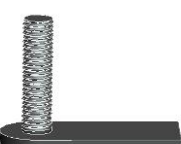





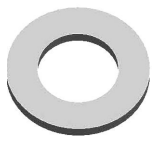
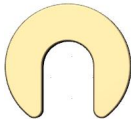



LR idler bracket



OBD connector



Wire harness: one set for motor power and signal

| | | | | | | |
|---|--|---|---|---|---|--|
|  |  |  |  |  |  |  |
| T-shape screw 2 pcs (M8*30) | T-shape screw 2 pcs (M6*25) | M10*25 socket cap screw 8 pcs | M10*30 ocket cap screw 8 pcs | M8 nut 2pcs | M6 nut 2 pcs | Tie wire 20 pcs |
|  |  |  |  |  | | |
| M10 washer 8 | U washer 10 pcs | M8 washer 8 pcs | M6 spring washer 8 | Plastic line 1 pc | | |

Screw package

FORD EVEREST INSTALLATION MANUAL

1 Install ECU, OBD and wiring



1) take out fuse



2) connect power wire to battery: red one with fuse is positive.



Caution!

Tighten battery screw very tight! If loose, may get damage to the car.



4) from this position, insert to left site



5) negative position



6) ECU fixing as above by screw

FORD EVEREST INSTALLATION MANUAL



7) left motor wire from this position to left side



8) connect OBD as above picture



9) right motor line from above position from chassis to cabin



10) motor line from above position from chassis to cabin



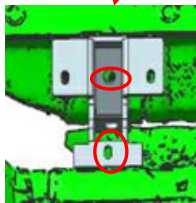
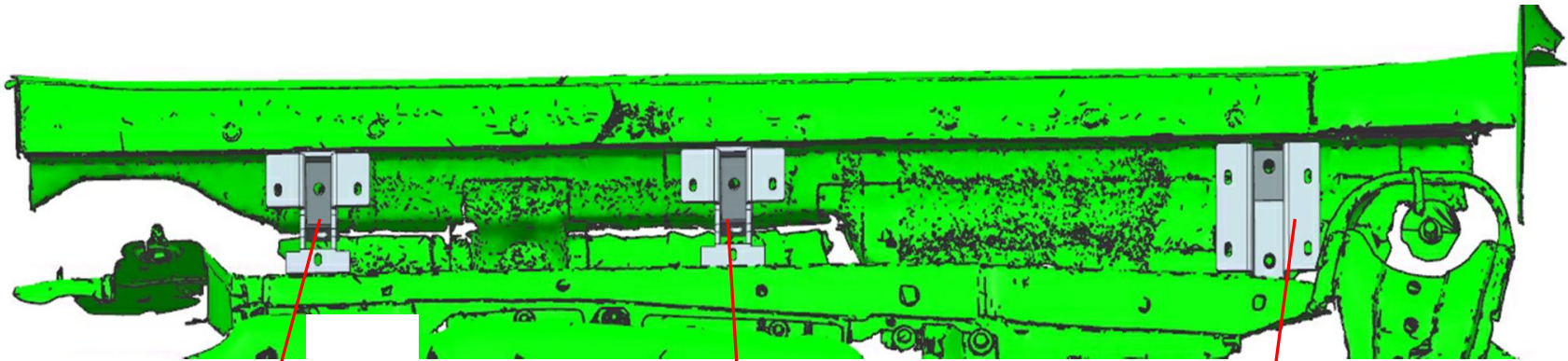
11) motor line from this hole to cabin

12) connect motor connectors and use tape to protect. Connect OBD line with ECU connector. Insert fuse to test if motor work well.

FORD EVEREST INSTALLATION MANUAL

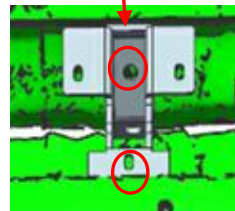
2. Install connections (right side, 2 sides in same way to install)

Car direction (right side)



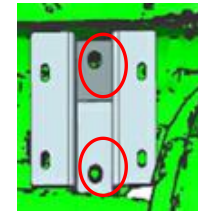
Rear connection

Use M10x30 screws



Middle connection

Use M10x30 screws



Front connection

Use M10x30 screws

Tighten all screws !

FORD EVEREST INSTALLATION MANUAL

3. Install bracket (right side, 2 sides in same way to install)

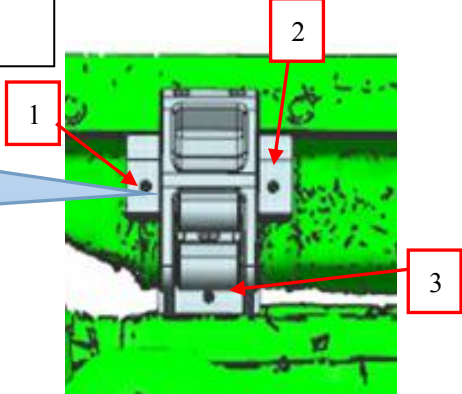


Rear idler bracket

Middle motor bracket

Front idler bracket

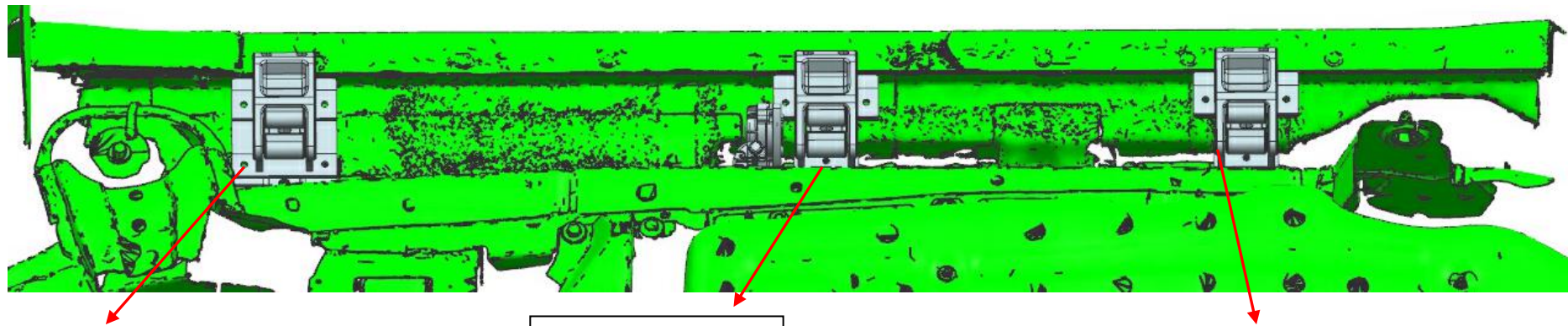
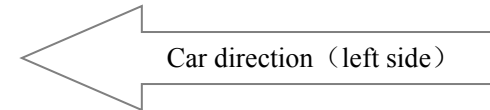
1.2.3. use M8x30 screws to fix



KEEP ALL SCREWS A LITTLE LOOSE, SO THAT BRACKET CAN MOVE WITH RUNNING BOARD!!!

FORD EVEREST INSTALLATION MANUAL

- 4. install connection, left side (same as right side)
- 5. install brackets, left side

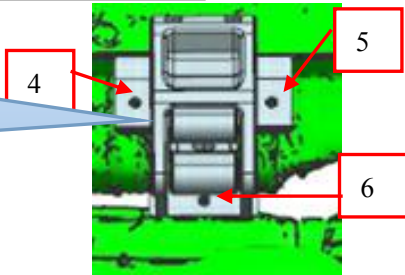


Front idler bracket

Middle motor bracket

Rear idler bracket

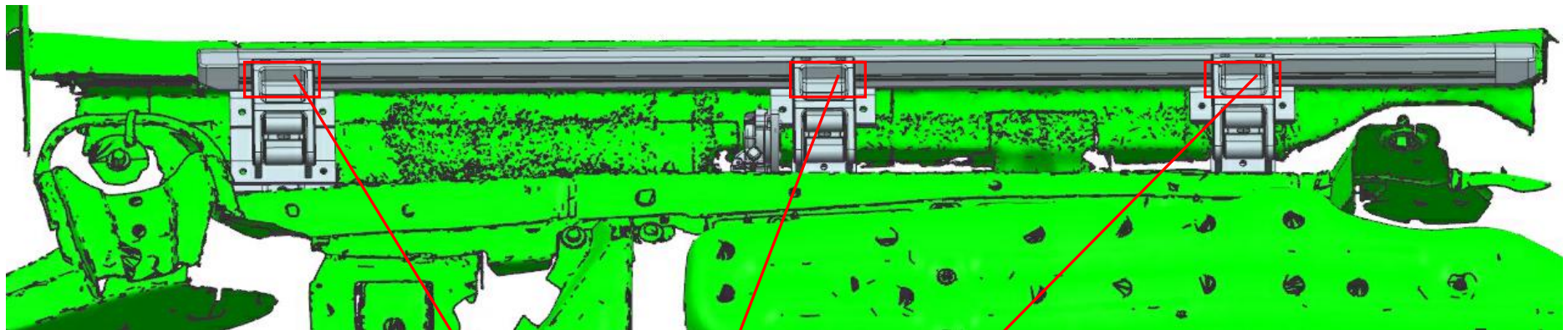
4.5.6. use M8x30 screws to fix



KEEP ALL SCREWS A LITTLE LOOSE, SO THAT BRACKET CAN MOVE WITH RUNNING BOARD!!!

FORD EVEREST INSTALLATION MANUAL

6. install running board (left and right side are in same way)



Use M6x25 screw and spring washers to fix running board with brackets.

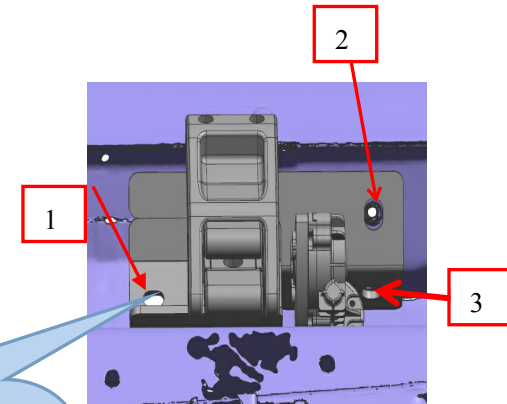
TIGHTEN SCREWS !

FORD EVEREST INSTALLATION MANUAL

7. Testing and adjust the balance



Insert fuse again. Then open and close doors to let step work. To assure them up and down freely to adjust position by itself.



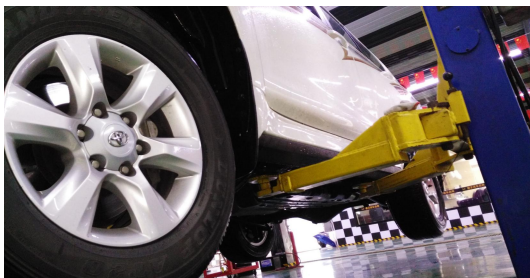
**FASTEN ALL THE SCRWS
(3x4=12) ON THE 4
BRACKETS**

If still not balance, use U
shape washer to adjust it.

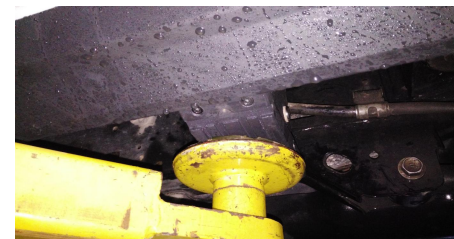
FORD EVEREST INSTALLATION MANUAL



8, Checking all doors activate, the side step work when doors open and close. Now the installation is finished. Protect all connectors with tap to avoid loose.



To lift the car as showed



To lift the car

FORD EVEREST INSTALLATION MANUAL



To changing tire

Automatic power deploy:

The running boards will extend down and out when the door is opened.

Automatic stop:

If an object is in the way of the moving running board, the running board will automatically stop. To reset, clear any obstruction, then simply open and close the door to resume normal operation.

Manually set in the deployed (OUT) position for access to the roof:

Step your foot while at the same time closing the door. To resume normal operation, open and close the door.

Maintenance: In adverse conditions, debris such as mud, dirt, and salt may become trapped in the running board mechanism, possibly leading to unwanted noise. If this occurs, manually set the running boards to avoid spraying the motors directly. After washing, apply silicone spray lubricant to the hinge pivot pins.

Caution! Keep hands and feet away when the running board is in motion.